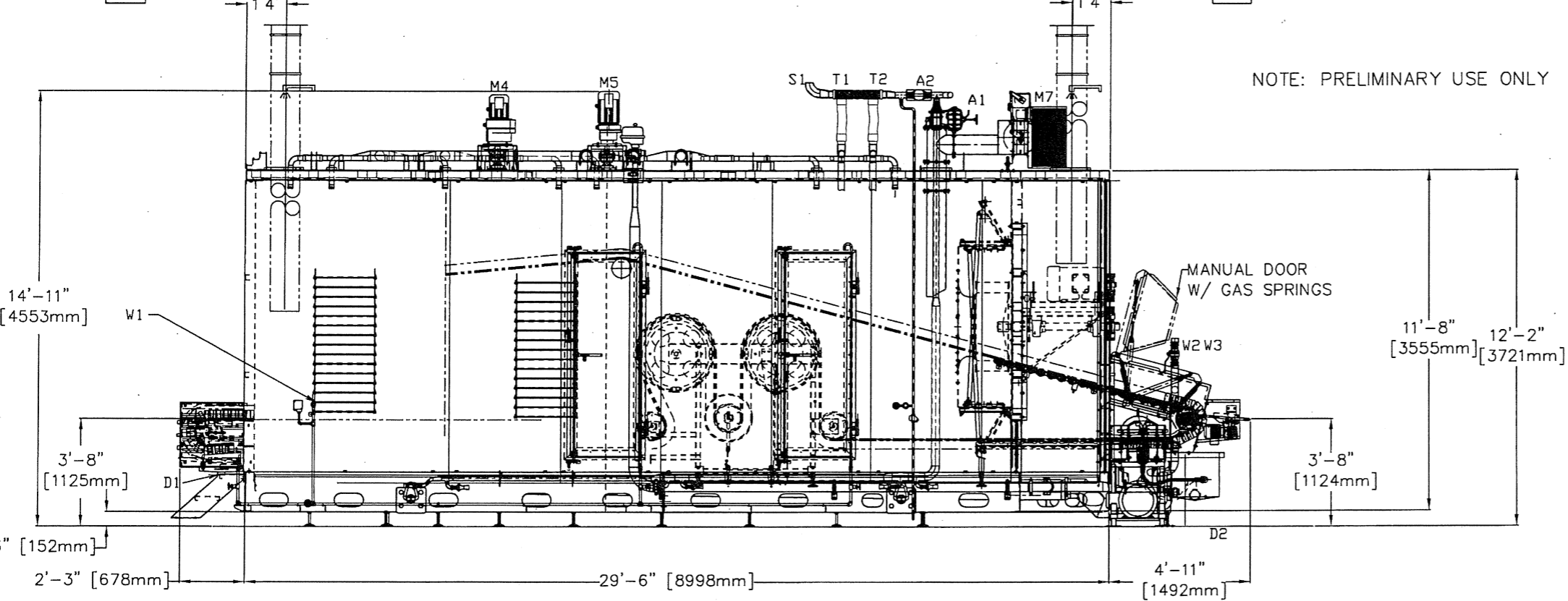
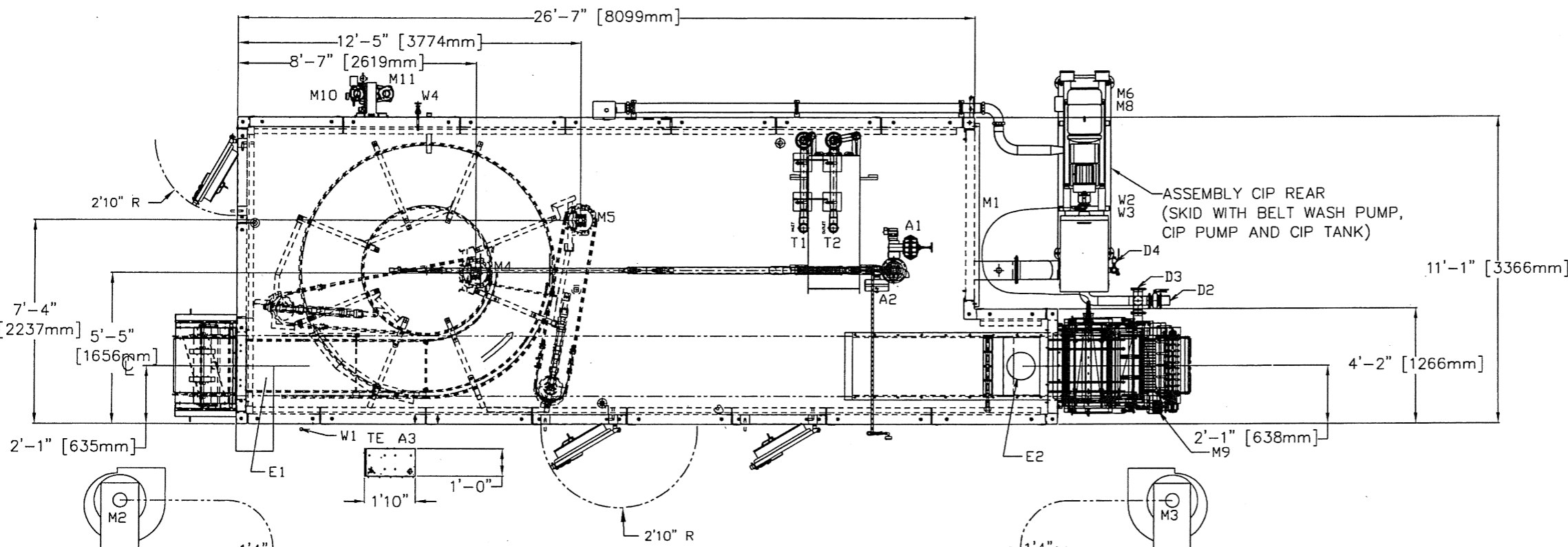


NOTE:

REF: D-271-06-1362 (BASE PAD, OVEN CABINET)  
FOR FLOOR DIM & RECOMMENDED SLOPE.  
USABLE BELT WIDTH 24.2"

\* INSTALL VARIABLE FREQUENCY  
CONTROLLER IN A  
CLEAN, DRY AREA +32°F TO  
+104°F (0°C TO + 40°C)

\* OVEN IS SHIPPED PREWIRED WITH CENTRALLY LOCATED JUNCTION BOX ON ROOF  
\* IT IS IMPORTANT THAT THE BELT WASH SUPPLY PIPE IS 2" IPS OR LARGER



NOTE: PRELIMINARY USE ONLY

ELECTRICAL

- MOTORS**
- M1: 30HP CIRC. FAN/35,000CFM (1 REQ'D)
  - M2: 1HP INFEED EXHAUST FAN
  - M3: 1HP DISCH. EXHAUST FAN
  - M4: 1.5HP INNER BELT DRIVE
  - M5: 3HP OUTER BELT DRIVE
  - M6: 30HP CIP PUMP
  - M7: MODUTROL MOTOR
  - M8: 15HP BELT WASHER PUMP
  - M9: 0.5HP TAKE-OFF CONVEYOR
  - M10: LUB. - BRGS.
  - M11: LUB. - RAILS

THE MAIN CONTROL PANEL IS TO BE LOCATED REMOTE. POWER WIRING TO THE CONTROL PANEL IS THE RESPONSIBILITY OF THE CUSTOMER.

STEAM SUPPLY

- S1-STEAM DROP 3" IPS
- 3000 LBS. /HR. MAX

IT IS RECOMMENDED THAT THE CUSTOMER INSTALL A STEAM PRESSURE REGULATOR TO ALLOW A STEAM PRESSURE SETTING BETWEEN 60 & 80 P. S. I. TO THE OVEN

WATER SUPPLY

- W1-WATER DROP (COLD) 1" IPS 40 P. S. I. NOMINAL (DOOR COOLING)
- W2-WATER DROP (HOT) 2" IPS MIN. -40 P. S. I. MIN. (BELT WASHER)
- W3-WATER DROP (HOT) 2" IPS-40 P. S. I. NOMINAL (CIP TANK)
- W4-WATER DROP (COLD) 1" IPS-40 P. S. I. NOMINAL (BALL RAIL RINSE)

AIR SUPPLY

- A1-STEAM CONTROL VALVE
- A2-STEAM STOP VALVE
- A3-CONTROL BOX

IT IS RECOMMENDED THAT THE CUSTOMER INSTALL A FILTER/LUBRICATOR/REGULATOR COMBINATION

80 P. S. I. NOMINAL  
1/2" SUPPLY TO 1/4" ALL CONNECTIONS

EXHAUST VENT

- E1-INFEED EXHAUST DUCT 12" (POWERED) / (2000 CFM)
- E2-DISCHARGE EXHAUST DUCT 12" (POWERED) / (2000 CFM)

IT IS RECOMMENDED THAT THE CUSTOMER INSTALL STACK SPRAY NOZZLES, SUPPLIED BY STEIN, UNDER THE EXHAUST FAN AND CONNECT TO THE C. I. P. SYSTEM.

DRAINS

- D1: 3" D. D. TUBING - 15' MIN FLOOR TO CENTER
- D2: 4" D. D. TUBING - 4' MIN FLOOR TO CENTER
- D3: 4" D. D. TUBING - 15' MIN FLOOR TO CENTER
- D4: 1/2" PIPE - OVERFLOW TO MAINTAIN WATER SEAL

TELEPHONE

- TE: TELEPHONE BY CUSTOMER

THERMAL FLUID

- T1: 3" SCH. 40 IPS. INLET
- T2: 3" SCH. 40 IPS. OUTLET

VARIABLE FREQ.	SIZE	QTY.	LOCATION *
VENT FANS	2 HP	2	BY CUSTOMER
CONVEYOR	7.5HP	1	BY CUSTOMER
CIRCULATION FAN	30 HP	1	BY CUSTOMER
TAKE-OFF CONVEYOR	2 HP	1	BY CUSTOMER

LTR/PCD NO.	DESCRIPTION	DWN & CHK	APVD
REVISIONS			
FINISH: -----			
UNLESS OTHERWISE SPECIFIED			
DIMENSION		MACH TOLERANCE	SH METAL TOLERANCE
DECIMAL	.xxx	± .005	± .010
DECIMAL	.xx	± .02	± .03
ANGLES	x°	± 1/2°	± 1°
THIS DESIGN IS THE PROPERTY OF STEIN INC. IT IS NOT TO BE USED AS THE BASIS FOR MFG. OR SALE OF EQUIPMENT WITH OUT OUR WRITTEN PERMISSION.		MODEL	TITLE
		GCO-66	UTILITY DRAWING GCO-66
		ECN	14956
PRODUCT CODE: 1397		DWN	DATE
		DEM	06-02-03
		CHK	AK
		APVD	DEM
INITIAL USAGE: -----		DATE	SIZE
		06-02-03	D
		DWG NO.	271-06-1430
		REV	SH 1 OF 1



DATE	06-02-03
SIZE	D
DWG NO.	271-06-1430
REV	SH 1 OF 1